



Sunday 14 November 2021

Mark 13:24-32

33rd Sunday in Ordinary Time

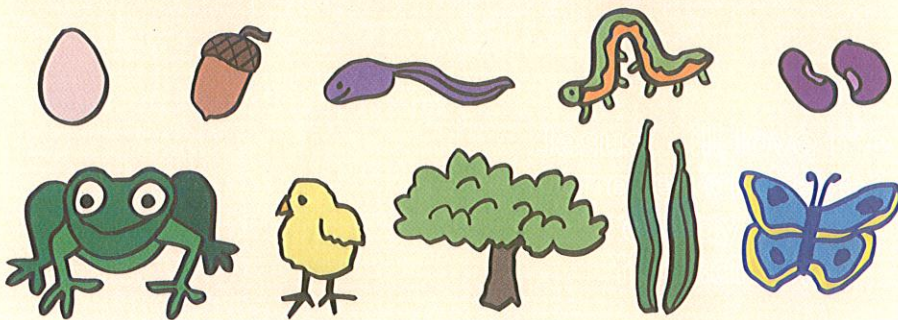
# IN THE GOSPEL TODAY

My name is \_\_\_\_\_

Other things will come and go, but Jesus will always be with us. We are to keep our eyes open because he is coming into our lives again in a special way soon. Just as we know that summer is coming when we see the buds on the trees, we know that Jesus is near.

## BE GENEROUS!

Most things change with time. Draw a line from each of these pictures to show what they grow into.



### Maze

Help Jesus find his way so that he can be together with us again.



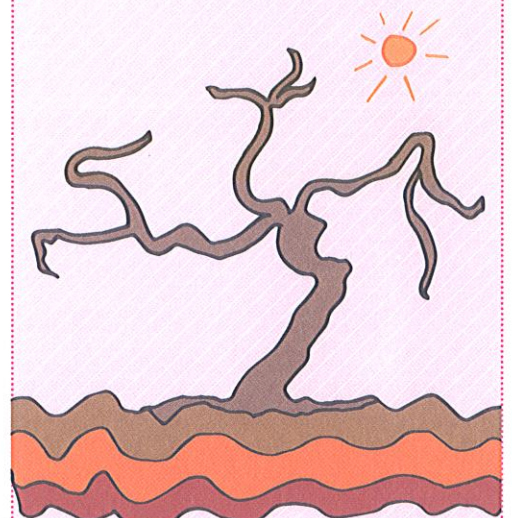
### Who does God love?

Jesus is always near us, in our hearts and the love we have in our lives.

Draw a picture of you standing close to Jesus



### The fig tree



The fig tree tells us that summer is near when its leaves come out. Draw the leaves on the tree to show that summer is near.

### A PRAYER TO SAY

Dear Jesus, thank you for always being with me and loving me. Help me to feel your loving presence in my life. Amen.